



Malting Lane, Isleham, CB7 5RZ

CHEFFINS

Malting Lane

Isleham,
CB7 5RZ

- 3 Storey Town House
- 4 Bedrooms – 1 Ensuite
- Large Sitting Room
- Well Equipped Fitted Kitchen/Dining Room
- Village location
- Garden & Parking
- Available start of Jan 2024
- EPC rating C

A substantial 4 bedroom town house with accommodation arranged over three floors. The property is well presented throughout and benefits from a well-equipped fitted kitchen and dining room with double aspect, a top floor master bedroom with an ensuite and a large ground floor sitting room. Additional features include gas central heating, sealed unit double glazing, off-road parking for 2 vehicles. EPC Rating C. Available now.

 4
  2
  2

£1,395 PCM





LOCATION

ISLEHAM is an attractive village with good local facilities including a range of shops, post office, primary school and parish church. The racing town of Newmarket lies seven miles south via the A14, the cathedral city of Bury St Edmunds lies 17 miles south east via the A14, and the university city of Cambridge lies 18 miles south west via the A142 and A14. Mainline rail services are situated at both Ely and Newmarket.

ENTRANCE PORCH

with half glazed entrance door leading from Malting Lane.

CLOAKROOM

with low level WC, hand basin with tiled splash backs, extractor fan

INNER HALLWAY

with access to roof space, stairs leading down to mid floor, radiator.

KITCHEN/DINING ROOM

with a well equipped fitted kitchen comprising 1.5 bowl stainless steel sink unit and drainer with mixer tap, a range of fitted base and wall mounted units, worktops and tiled splash backs, integrated Neff eye level stainless steel oven and grill, 5 burner gas hob with stainless steel extractor hood over, integrated Smeg dishwasher, integrated washing machine, cupboard housing Vokera gas fired central heating boiler, tiled flooring, radiator, window to front aspect, and bay window to side aspect.

MASTER BEDROOM

with double built-in wardrobe, radiator, pair of French doors with glazed side screens with a Juliette balcony and far reaching views.

ENSUITE BATHROOM

with bath with mixer tap and shower attachment, pedestal hand basin, low level WC, tiled splash backs, shaver point, ladder style heated towel rail, window to rear aspect.

MID FLOOR LANDING

with stairs leading down to the ground floor, radiator.

BEDROOM 2

with radiator, window to rear aspect.

BEDROOM 3

with radiator, window to side aspect.

BEDROOM 4

with radiator, window to side aspect.

BATHROOM

with bath with mixer tap and shower attachment, hand basin with mixer tap and cupboard storage under, low level WC, tiled splash backs, shaver point, airing cupboard with cylinder immersion, extractor fan, radiator.

GROUND FLOOR

HALLWAY

with walk-in under stair storage cupboard, radiator.

SITTING ROOM

with feature fireplace, slate hearth and surround, laminate flooring, radiator, window to rear aspect, pair of French doors leading to the rear garden.

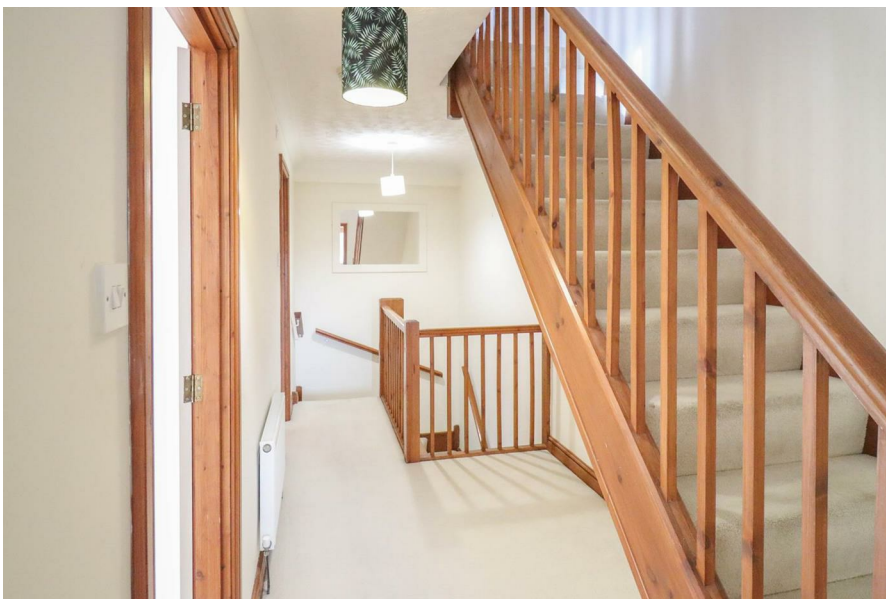
GAMES ROOM

OUTSIDE

To the rear of the property is a low maintenance walled south facing rear garden, laid to paving and shingle with a timber shed and gated access to the rear.

Adjoining the property are 2 allocated parking spaces.







Energy Efficiency Rating		
	Current	Potential
Very energy efficient - lower running costs		
(92 plus) A		
(81-91) B		
(69-80) C		
(55-68) D		
(39-54) E		
(21-38) F		
(1-20) G		
Not energy efficient - higher running costs		
	70	82
England & Wales		
EU Directive 2002/91/EC		

£1,395 PCM
Council Tax Band - D
Local Authority -



2 Black Bear Court, Newmarket, Suffolk, CB8 9AF | 01638 663228 | cheffins.co.uk

IMPORTANT: we would like to inform prospective purchasers that these sales particulars have been prepared as a general guide only. A detailed survey has not been carried out, nor the services, appliances and fittings tested. Room sizes should not be relied upon for furnishing purposes and are approximate. If floor plans are included, they are for guidance only and illustration purposes only and may not be to scale. If there are any important matters likely to affect your decision to buy, please contact us before viewing the property.

